

# THE ADVOCATE

Planned Parenthood League of Massachusetts

## WELCOME DOMINIQUE LEE!

### Meet Planned Parenthood League of Massachusetts' new President and CEO

In September 2023, Planned Parenthood League of Massachusetts (PPLM) began a new chapter under the leadership of Dominique Lee, our new president and CEO. A life-long sexual health and reproductive rights advocate and expert health care leader, Dominique is a natural fit. Prior to this role, she spent 15 years leading health center operations and managing patient services at multiple Planned Parenthood affiliates, culminating as chief operating officer at the Federation's largest affiliate, Planned Parenthood Mar Monte, where she oversaw operations and delivery of care across 35 health centers in mid California and Northern Nevada. Most recently, Dominique helped spearhead the health domain at IDEO, where she collaborated with organizations to amplify health equity, foster social impact, and optimize strategy, operations, and revenue streams.

But it is her time at PPLM early in her career that Dominique credits with developing her passion for this work and transforming her into the leader she is today:

**"PPLM is celebrated for its exceptional health care and education, its groundbreaking research, and its steadfast advocacy; and it cultivated in me a career-long dedication to the Planned Parenthood mission. When I started my career as a health care assistant at PPLM's former express center in Davis Square, I could never have imagined I would be back here to lead the organization. It's surreal but also an incredible homecoming."**

Dominique is uniquely prepared to lead PPLM's efforts to broaden patient access and advance health equity in a post-Roe world. Her track record of

effective leadership includes introducing abortion services in underserved regions and positioning affiliates for sustainability, even while operating under some of the most hostile regulatory conditions. Her commitment to her role is powered by a dual motivation to serve patients and to nurture staff, as evidenced by her priorities:

#### Strategic Health Equity Initiatives

Spearheading projects that will support and improve access for BIPOC communities, and focusing on diversity, equity, inclusion, and belonging (DEIB) internally, Dominique envisions a health care system that is free of stigma and accessible to all.

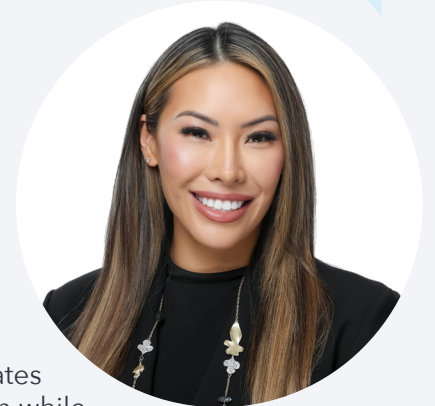
#### Operational Excellence

With experience leading health care transformations at affiliates in both red and blue states, Dominique possesses the foresight to strategize and attain financial sustainability, ensuring the growth, innovation and advancement of health care operations.

#### People-Centric Approach

Dominique champions a people-centric approach, prioritizing open communication and staff empowerment. By cultivating better work environments, she believes this ultimately results in improved care and a better experience for patients.

PPLM's future is bright under Dominique's leadership, and we hope you will join us in welcoming her back to the place where she started her journey as a reproductive rights champion.



# LEADERSHIP CORNER

Dear friends,

Throughout my career working to improve health care systems and fighting for patients' rights to control their bodies, equitable access to reproductive health care has always been my north star. I've seen firsthand the deeply varied access patients have to essential health care, even in states where abortion, sex education, and other stigmatized care are protected. Massachusetts can be a shining example of safeguarding reproductive rights and delivering on the promise of access to every person. That's why I am thrilled to be leading PPLM in this moment.

For me, Planned Parenthood is synonymous with empowerment, purpose, and joy. It is my goal that every person who walks through our doors – whether they're a patient or a staff member – feels the embrace of an organization that respects, uplifts, and cares for them, no matter what.

In this Advocate, you'll hear about how we've reenvisioned our annual Advocacy Fund fundraiser to engage supporters in a new way (page 2). You'll also read about an exciting opportunity our education team has to expand the reach of our popular *Get Real* High School sexuality education curriculum (page 3).

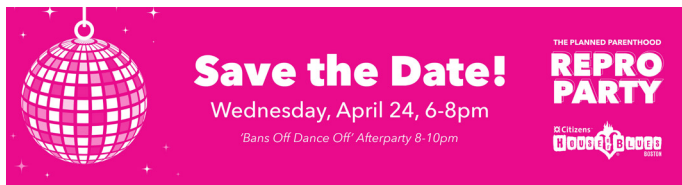
It is bound to be another exciting and tumultuous year for the movement for sexual and reproductive health, rights, and justice. So, thank you from the bottom of my heart for your commitment to our mission.



Sincerely,  
**Dominique Lee**, President and Chief Executive Officer

## ADVOCATE PERSPECTIVES:

### SAVE THE DATE FOR PPAF'S NEW FUNDRAISER – THE REPRO PARTY!



Spring is one of my favorite times of year – the days get longer, the flowers bloom, and the Planned Parenthood Advocacy Fund (PPAF) hosts our annual fundraiser. **This year we're changing things up – and you won't want to miss it!**

For the last decade, PPAF has hosted Celebration of Choices, a gala fundraiser to support the work of PPAF. This event has long been loved by our supporters, and we are excited to share a newly envisioned event that keeps the best parts of Choices while expanding the program to engage more people in our communities that care about reproductive freedom.

This will be a party with purpose. Your attendance at this event will ensure that PPAF can elect reproductive rights champions, lobby for stronger protections, and

advocate for the rights of our patients and communities.

The **Planned Parenthood Repro Party** will be held on **Wednesday, April 24th** at the **House of Blues** in Boston, and will start with a cocktail party from 6-8PM. Here, guests will have an opportunity to enjoy drinks and hors d'oeuvres while learning about the incredible work that PPAF has accomplished over the last year and hopes to do, with your support, in the coming year. It will also feature the presentation of the third annual Nonnie S. Burnes Award for Advocacy and provide attendees an opportunity to meet our new President and CEO, Dominique Lee. Then at 8PM, the lights will go down, the music comes up and the **Bans Off Dance Off**, a dance party to support PPAF kicks off.

Keep your eye out for information about ticket prices, special guests, and fundraising opportunities in the coming weeks. See you on April 24th!



**Nate Horwitz-Willis**, Executive Director,  
Planned Parenthood Advocacy Fund of  
Massachusetts

## GET REAL HIGH SCHOOL GETS EVALUATED!



PPLM recently received a five-year, \$5 million federal grant\* to conduct a rigorous impact evaluation for our *Get Real* High School sexuality education curriculum. This is significant because a successful evaluation would put the high school curriculum on the *U.S. Health and Human Services' List of Evidence-based Programs for Teen Pregnancy Prevention (TPP)*, joining its middle school curriculum companion and offering it as an option to school districts across the country. This will result in an exponential increase in the number of young people and families who benefit from this curriculum.

The *Get Real* High School curriculum, which is for students in 9th or 10th grade, is comprehensive, inclusive, and trauma-informed. It's designed to teach students to delay sex, while also teaching them the consistent and correct use of protection methods once they do choose to become sexually active. The curriculum engages parents (and other caring adults) and also focuses on social and emotional skills such as self-management, social awareness, relationship skills, and responsible decision making.

Being awarded this federal grant to evaluate *Get Real* High School is a reflection of PPLM's expertise and long-standing commitment to developing innovative, effective sexuality education programs.

### What will the evaluation look like?

Evaluating a curriculum for effectiveness will take about five years. For this evaluation, the curriculum will be implemented by Planned Parenthood of Greater Ohio (PPGOH) in the Cleveland Metropolitan School District. In January, PPLM Education staff

traveled to Cleveland to train educators at PPGOH on how to teach *Get Real* and ensure staff on the ground are supported by our expert team. The evaluation itself will be conducted by Wellesley Centers for Women (WCW), a renowned women and gender focused research institution at Wellesley College.

In total, seven cohorts of high school students will be taught the curriculum over four and a half years, with the first cohort beginning in February 2024. Students will fill out knowledge surveys before, immediately after, and nine months after participating in the curriculum to measure how much they've learned, how the lessons have impacted their behavior, and to collect sexual health data.

Ten years ago, publication of a similar evaluation of PPLM's middle school curriculum demonstrated that *Get Real* is one of the few comprehensive sex education curricula that effectively delays sex and reduces risky sexual behavior among both boys and girls. Congratulations to PPLM's Education Team!



Young people and sex education advocates gathered in front of the Massachusetts State House to send a message to legislators that "sex ed isn't spooky" on October 25th

\* This project is supported by the Office of Population Affairs in the Office of the Assistant Secretary of Health of the U.S. Department of Health and Human Services (HHS) as part of a financial assistance award totaling \$1,000,000 with 100 percent funded by OPA/OASH/HHS. The contents are those of the author(s) and do not necessarily represent the official views of, nor an endorsement by, OPA/OASH/HHS, or the U.S. Government.

# FACES + PLACES



Group of sex education advocates at the "Sex Ed Isn't Spooky" rally in Boston on October 25th

The FY23 PPLM Annual Report is available online! We invite you to learn more about the work your investment in PPLM made possible by visiting [pplm.org/FY23AR](https://pplm.org/FY23AR).



PPLM's President and Chief Executive Officer Dominique Lee delivering her opening remarks during the President's Society Conference in November.



PPLM's Manager of Youth Education Leigh Carroll (on the left) and Director of Community Education & Engagement Michelle Soto (on the right) presenting to a group of attendees during the President's Society Conference in November.

Does your company match employee contributions to PPLM? Visit



[pplm.org/matching-gifts](https://pplm.org/matching-gifts) or check with your human resources department to see if your gift is eligible for a match.

Please support PPLM today by visiting [pplm.org/donate](https://pplm.org/donate) or emailing [development@pplm.org](mailto:development@pplm.org)

# FOCUS LOCAL