

Someone
you know
counts on
Planned
Parenthood

 Planned Parenthood®
of San Diego & Riverside Counties

ANNUAL REPORT
2009

 Planned Parenthood® | WE'RE HERE.™

THE MISSION OF PLANNED PARENTHOOD
OF SAN DIEGO & RIVERSIDE COUNTIES
IS TO ENSURE BROAD PUBLIC ACCESS TO
REPRODUCTIVE HEALTH CARE THROUGH DIRECT
SERVICE, EDUCATION, AND ADVOCACY.

Mission Statement

Board of Directors

Board Chair

Tracy Loughridge

Vice Chair

Andy Achterkirchen

Liaison to Pro Salud

Norma Ojeda

Secretary

Elizabeth Studebaker

Treasurer

Veronica Dela Rosa

Board Members

Rita Atkinson

Toni Atkins

LaVerne Brown

Barbara Bry

Anita I. Busquets

Valerie Cooper

Aura DeTrinidad

Jennifer Dreyer

R. Elaine Hanson, M.D.

Rudy Johnson

Leanne Hull MacDougall

Stephanie Moody-Geissler

Deborah M. Pate

Vera Pardee

Humberto Peraza

Ann R. Pumpian

Kathleen Strauss, Ph.D.

Sid Voorakkara

Lisa Walters-Hoffert

Linda Wasserman, M.D., Ph.D.

Ex-officio members

Harry Carter

PPFA National Board Member

David Preskill, M.D.

Past Chair of the Board

Jessica Kingston, M.D.

Medical Advisory Committee Chair

Fran Rodenberg

Friends of Planned

Parenthood President

Samuel Ward

Action Fund Board Chair

Executive Team

President & CEO

Darrah DiGiorgio Johnson

Executive Vice President

Nancy Sasaki

Medical Director

Katharine Sheehan, M.D.

Vice President/ Chief Financial Officer

Len Dodson

Senior Vice President/ Patient Services

Angela Reed

Vice President/Development

Keith Limberg

Vice President/ Strategy Management

Rebecca Karpinski

Vice President/Public Affairs & Communications

Vince Hall

Vice President/ Community Engagement

Nora Vargas

Credits

Editor/Director of Marketing & Communications

Jennifer Coburn

Copywriters

Mary Veta

Kersten Wehde

Graphic Design

Suzette Durazo





Darrah DiGiorgio Johnson, President & CEO

Dear Friends...

At Planned Parenthood we know that trust is the cornerstone of our success. For 47 years, the community has counted on us to compassionately provide health care information and services that prevent unintended pregnancies and reduce the risk of sexually transmitted infections. Our Education & Training Department is invited to schools and community youth groups because educators know that Planned Parenthood offers age-appropriate, comprehensive sexuality education. The community trusts us because we focus on preventive services that help women and men stay healthy.



Tracy Loughridge, Board Chair

In 2009 Planned Parenthood of San Diego & Riverside Counties provided 278,156 medical visits and served 13,000 more patients than the previous year. Patients know they can count on Planned Parenthood for a wide range of preventive services, so they return to us year after year for reproductive health care, from birth control to cervical cancer screenings. The community knows that our doors are open to every person, every family, and every community.

Our centerpiece achievement for 2009 was the establishment of a new Community Engagement Department, which builds on the trusted partnerships we have established with community leaders. Our relationships with organizations like the United African American Ministerial Action Council, Riverside Challenges of Youth Coalition, and the Black Infant Health Program have flourished. As a result, we increased the depth and breadth of our service to the community.

Our Public Affairs Department worked tirelessly to help pass meaningful health care reform that protects and enhances access to women's health care. We were disappointed that abortion became a highly politicized issue in the closing days of the debate, but women's health care — and all health care — will be more affordable and accessible as a result of this landmark legislation.

Like many organizations Planned Parenthood experienced financial challenges in 2009. We have adjusted our operations in order to continue providing critical services to the community while being fiscally prudent in all we do. Providing low- to no-cost reproductive health care has its challenges, but we remain steadfast in our commitment to offering high-quality medical services, comprehensive sexuality education and political advocacy. In these uncertain times, you can trust Planned Parenthood to be there for you.

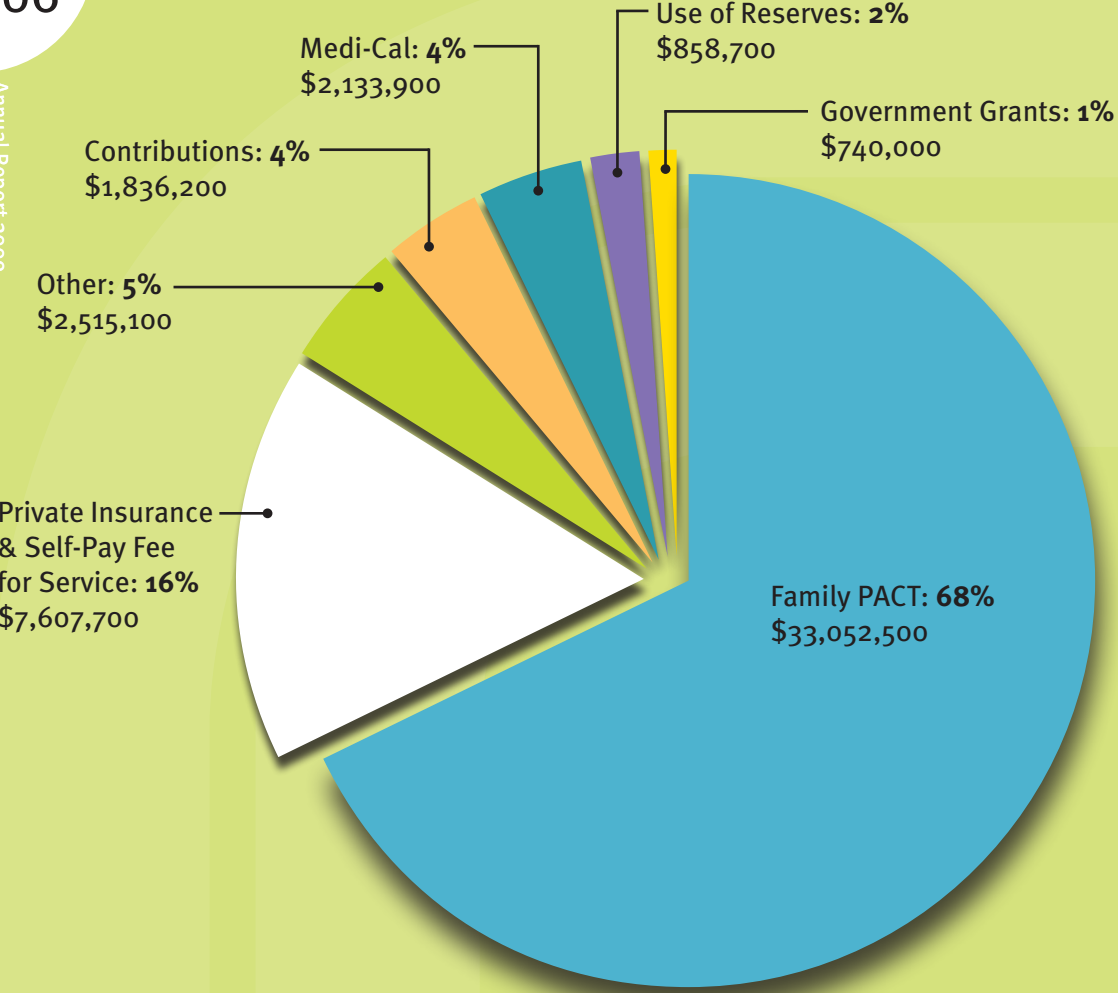
Darrah DiGiorgio Johnson, President & CEO | Tracy Loughridge, Board Chair

“I support Planned Parenthood because they offer affordable reproductive health services. Everyone deserves equal access to health services.”-Kristine V.



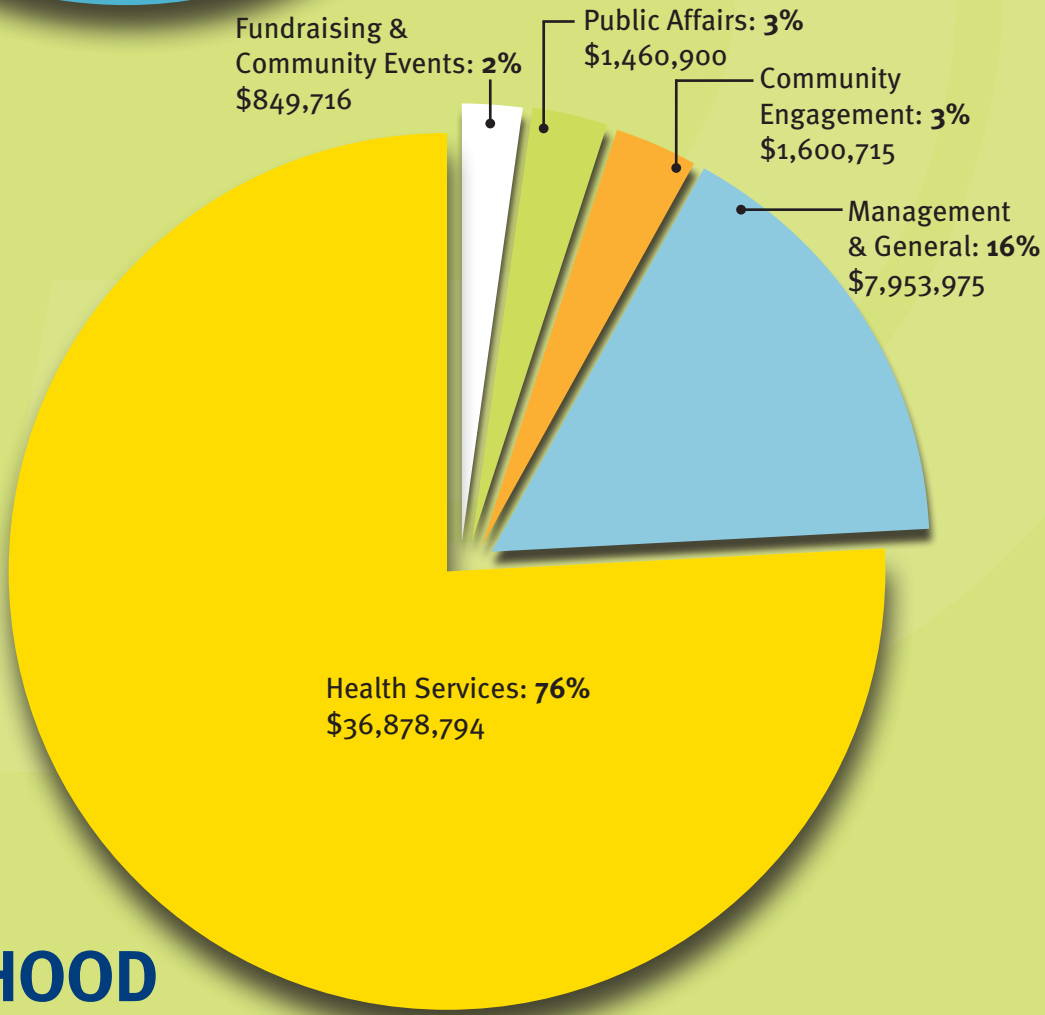
WE'RE HERE.SM

Financial Overview



Revenue:
Total Funds = \$48,744,100

Expenses
Total Expenses = \$48,744,100



YOU CAN COUNT ON PLANNED PARENTHOOD

YOU TRUST PLANNED PARENTHOOD... PLANNED PARENTHOOD TRUSTS YOU

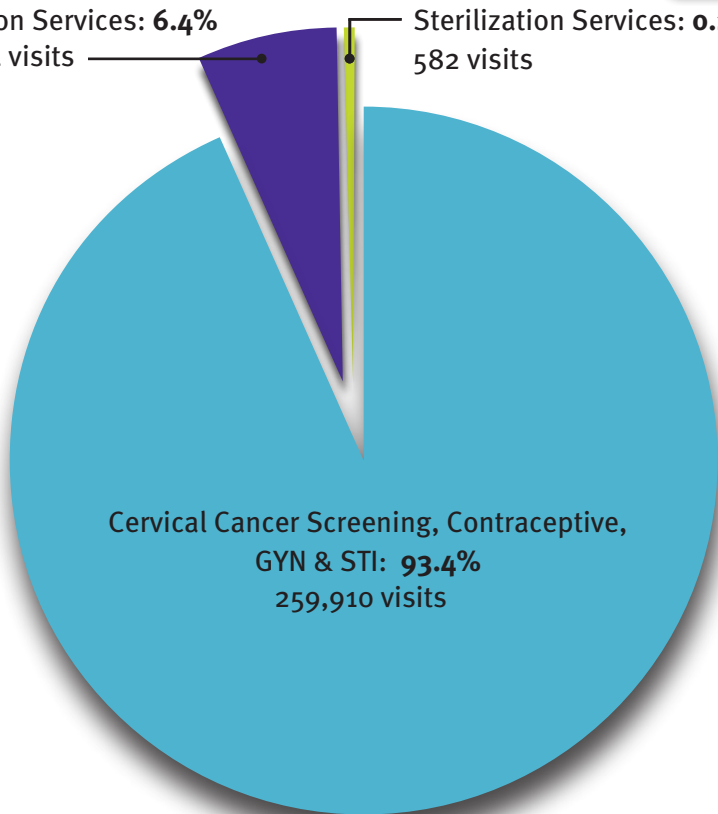


Patient Services



Abortion Services: **6.4%**
17,664 visits

Sterilization Services: **0.2%**
582 visits



2009 MEDICAL VISITS

TOTAL PATIENT VISITS = **278,156**

“EVERYONE SHOULD HAVE THE FREEDOM OF CHOICE!”

-CARL C.

“EDUCATION IS THE BEST PREVENTION!”

-HAMID M.

“PLANNED PARENTHOOD IS SAFE AND CONFIDENTIAL.”

-KAREN A.

“I NEVER FEEL JUDGED AT PLANNED PARENTHOOD.”

-JEN S.

Patient Services

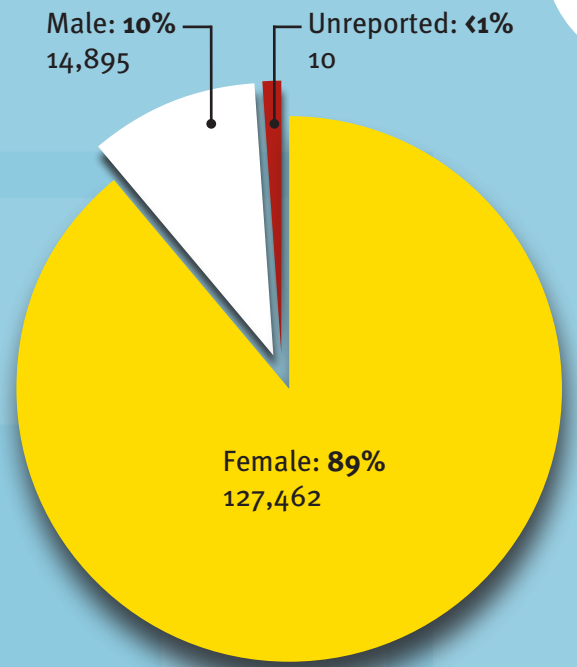
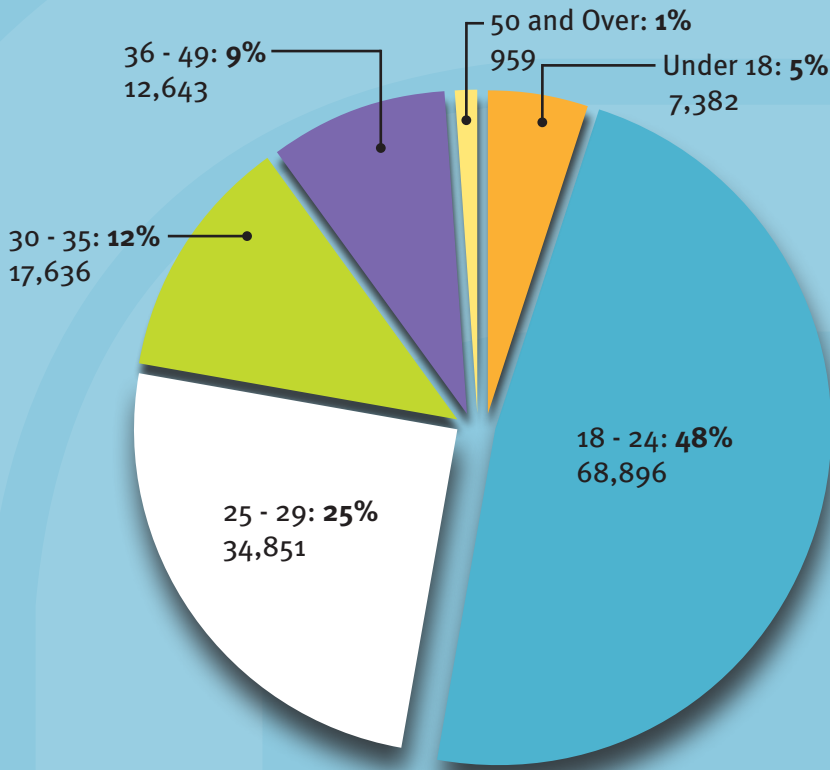
In this time of economic hardship, our 19 health centers continued to be a trusted community resource. We served 13,000 more patient visits than in 2008.

Technology dramatically improved service to our patients in 2009.

We implemented an Electronic Medical Records (EMR) system at nine health centers. This technology allows clinical staff to share medical information when patients visit multiple centers to ensure continuity of services.

- Our new Online Appointment Requestor enables patients to make appointments quickly and easily using the Internet.
- Our self-pay patients can now leave any of our health centers with a year's supply of birth control. This revolutionary “Plan Now, Pay Later” program provides 365 days of pregnancy protection with a single visit.
- We created our own in-house television channel to play in all our reception areas, showing an engaging mix of educational material and music videos.
- We continued our commitment to expanding access to reproductive health services through direct care and training. We trained 23 physicians and eight advanced practice clinicians in abortion services.
- We were honored to be selected by the U.S. Department of State International Visitor Program to host a group of OB/GYNs from India, Pakistan and Afghanistan. The doctors were invited to visit leading women's health care centers in the United States to learn about best practices. We shared information about birth control, education and community outreach programs, cervical cancer screening protocols and abortion services.
- We implemented Rapid HIV testing (an on-site 15-minute HIV test) at all of our health centers to increase access to testing and treatment of sexually transmitted infections. We also participated in “GYTo9” (Get Yourself Tested 2009), a national public education campaign between Planned Parenthood, MTV, the CDC and the Kaiser Family Foundation.
- We expanded access to health care by implementing two new birth control options: Abortion patients can have an IUC (Intrauterine Contraception) inserted for long-term contraception at the time of their surgical visit; and for those who want permanent birth control, Essure is safe, incision-free, and offers a much quicker recovery than the traditional tubal ligation method.
- We took our services to the streets to better serve those who cannot easily access our health centers. We built deeper community partnerships, especially in the areas we've identified as having particularly poor sexual health outcomes.

Patient Demographics

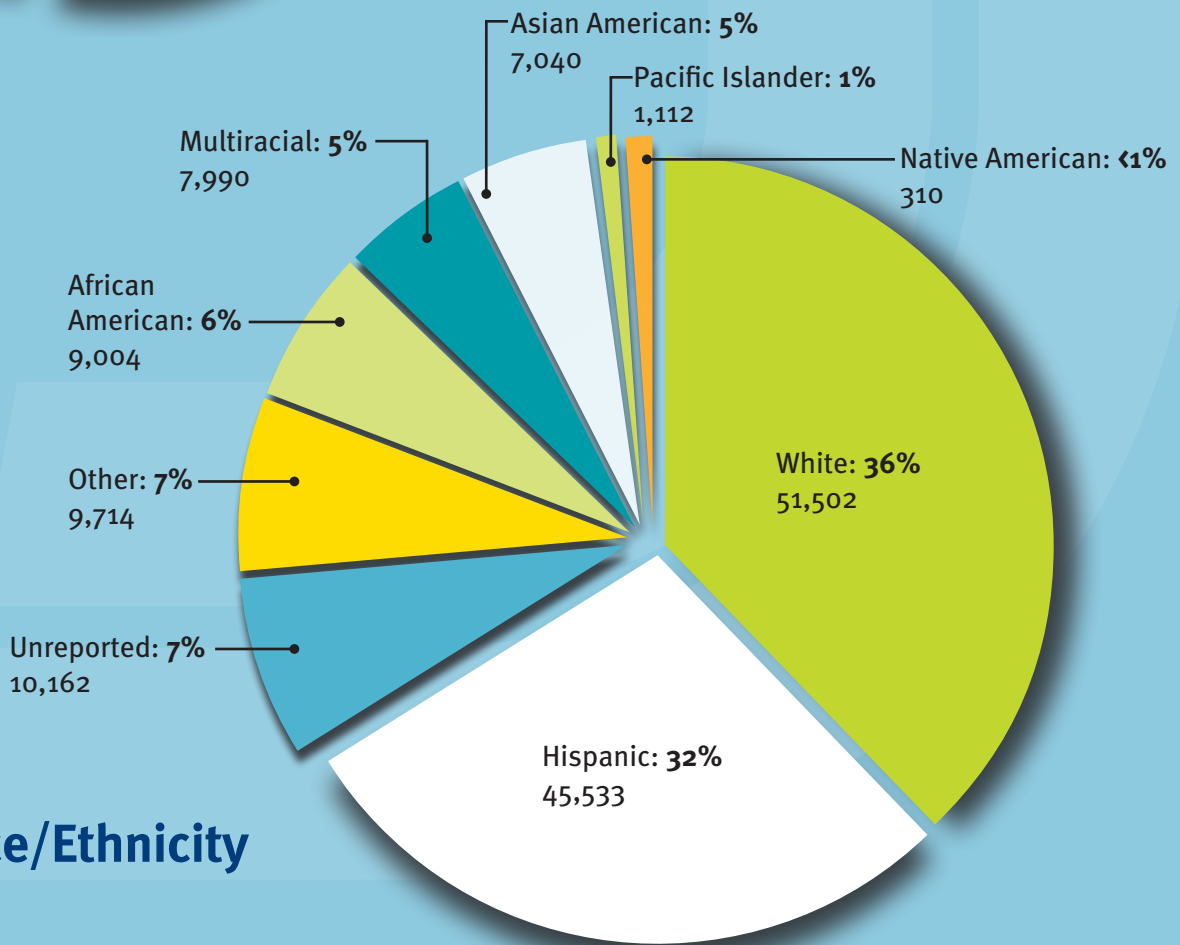


Patients by Gender

Total = 142,367

Patients by Age

Total = 142,367



Patients by Race/Ethnicity

Total = 142,367

YOU CAN COUNT ON PLANNED PARENTHOOD TO BE THERE FOR EVERY PERSON, EVERY FAMILY, EVERY COMMUNITY

TRUSTED COMMUNITY PARTNERS

Community Engagement

In 2009 PPSDRC introduced our new Community Engagement Department, which is responsible for facilitating, coordinating, representing and advancing the mission of the agency through active partnership with the community.

This vibrant new addition to the agency houses three divisions: the internationally acclaimed Binational Affairs Department, the award-winning Carolyn Shuck Education & Training Department, and the new Community Development Department. Working in coalition with social justice, service and advocacy groups, the Community Engagement Department enhances the quality of life in the region.

Under the leadership of Vice President Nora Vargas, the new department has already made great strides toward strengthening our community partnerships and forging new alliances with a diverse coalition of stakeholders.

We are excited about the tremendous opportunities Community Engagement provides the agency to serve our region better than ever before!



Staff and guests at a reception co-hosted by the United African American Ministerial Action Council and Planned Parenthood of San Diego & Riverside Counties in honor of African American History Month.

A TRUSTED SOURCE OF MEDICALLY ACCURATE, AGE-APPROPRIATE, COMPREHENSIVE SEXUALITY EDUCATION



The Carolyn Shuck Education & Training Center

Contacts reached through:

High School Education (including alternative settings)...	8,812
Middle School Education.....	700
Elementary School Education.....	226
Peer Education.....	700
Teen Parent Programs.....	38
Parent/Child Communication Program.....	1,708
“Ask Edna” Requests.....	225
Other Education and Outreach.....	1,314
Professional Training.....	915
Total Contacts Reached.....	14,638



“THEY OFFER BENEFICIAL SERVICES FOR ANYONE!”

-CHANELLE D.

“THEY PROVIDE LOW-COST HEALTH CARE.”

-ELAINE D.

“THEY OFFER RESOURCES AND PROMOTE SAFE SEX.”

-JESSICA R.

“THEY KNOW WHAT THEY ARE TALKING ABOUT.”

-LILY P.

The Carolyn Shuck Education & Training Center

- PPSDRC educators provided nearly 9,000 high school students the education and resources needed to make healthy choices about their sexuality.
- We offered the Youth Development Program (YDP) to more than 600 elementary and middle school students in communities with some of the highest rates of teen pregnancy and sexually transmitted infections. YDP provided education, skills and support to motivate participants to plan positive futures.
- Our 43 peer educators created a comfortable, school-based environment in which to provide healthy sexuality messages to their peers, enabling them to make smart, positive choices. Overall, the peer educators reached more than 700 of their peers.
- Planned Parenthood used social media and the Planned Parenthood website to reach teens, adults and community professionals with positive sexual health messages and information.
- Nearly 250 people contacted our educators through PPSDRC’s online “Ask Edna” column to receive advice on birth control, healthy relationships and sexuality.
- The Education & Training staff continued working to create a broader definition of sexuality using proven strategies as part of The New 3Rs philosophy of Rights, Respect and Responsibility. This strategy was integrated into the agency’s geographically focused work targeting communities that are most at-risk for poor sexual health outcomes.
- We implemented Teen Success, one of the first secondary pregnancy prevention programs in our region. The Teen Success Programs in both San Diego and the Coachella Valley encouraged participants to maintain their family size, complete their education and develop future goals.



- More than 1,700 parents received education on becoming “askable,” developing the skills and knowledge needed to be their child’s primary source of information about sexuality.
- More than 900 professionals received training to become more effective sexuality educators, enabling them to reach an additional estimated 32,000 young people with information they need to make responsible sexual decisions.
- In 2009, the Education & Training Department reached more than 14,000 people, providing over 2,700 hours of education and training to youth, adults and professionals in our three-county region.

“We support Planned Parenthood because they provide a much-needed service for our community.” -Jimmy D.



Community Development

- We participated in dozens of community-based events, including Praise Fest, César Chávez Day, and the United African American Ministerial Action Council's Community Unity Summit in San Diego. In Riverside, we participated in events sponsored by the YWCA, the Riverside Community Health Foundation, and Riverside Against Drugs.
- As a part of Latino Health Awareness Month, we hosted our first-ever Latino Health Forum in Riverside County.
- During Latino Heritage Month, we coordinated several community-based activities, including HIV testing at the Chula Vista and Coachella health centers.
- We hosted an HIV awareness event at the Community Settlement Association in Riverside.
- In partnership with the YWCA and the Riverside Area Rape Crisis Center, we co-hosted a Women's Self-Defense event that included physical techniques and information about healthy relationships.
- To gain greater insight into the diverse populations we serve, we coordinated tours of Southeastern San Diego, City Heights, Moreno Valley and Riverside for our staff and Board of Directors.
- We conducted the "Listen Up!" Project, informal focus groups with African American and Latino residents of Southeastern San Diego. Held at private homes, this project provided feedback that will inform our strategies to address the high rates of poor sexual health outcomes.
- We conducted a "Name Our Painting" contest, inviting patients to submit titles for an original canvas painted by Pres One, a renowned local graffiti artist from Writerz Blok Community Art Center.
- We coordinated the provision of HPV vaccines and HIV testing at several community events.



WE'RE HERE.SM

“They are a wonderful service to my community.” -Estela C.



Binational Affairs

- We organized our first “Binational Dialogue on the Status of Reproductive Rights in Mexico and the United States,” an exchange among leaders in reproductive health issues affecting both sides of the international border.
- We participated in “2009 Binational Health Week” in our service region, hosting different events aimed at improving health outcomes for Latinos in Southern California and the Baja region. During Binational Health Week we collaborated with Planned Parenthood Federation of America on National Latino AIDS Awareness Day, a nationwide effort to decrease HIV/AIDS rates in the Latino population.
- In December 2009 our Promotores Pro Salud Program expanded to Imperial County, offering peer-to-peer outreach by trained volunteers. Four fully trained *promotores* began working to improve the quality of life for Imperial Valley communities.
- Assemblymember V. Manuel Perez recognized our Promotores Pro Salud Program as a key player in improving the quality of life in the Coachella Valley. Recognizing the work of our *promotores*, Assemblymember Perez proclaimed October “Promotores Month.”
- Thanks to generous support from the Anderson Children’s Foundation in Palm Springs, we held a series of engaging classes that help foster healthy family communication. The program, which reached approximately 200 people, was hailed as an invaluable addition to the community. After a successful first year in the Coachella Valley, the Teen-Parent Communication Initiative migrated to Desert Shores to expand its impact on families in the region.
- Our sister affiliate in Baja California, Fronteras Unidas Pro Salud (FUPS), celebrated the grand opening of a new facility, “Clínica Las Fuentes,” in a newly developed shopping center in Tijuana.
- We continued offering Road Tours in which staff and members of the Board of Directors learned about our partnership with FUPS in Mexico and the Promotores Program in the Coachella Valley.



**HEALTHY INDIVIDUALS MAKE
HEALTHY COMMUNITIES**



**WE ARE A VITAL PART OF
HEALTHY COMMUNITIES**

DEFENDING WOMEN'S HEALTH AND REPRODUCTIVE RIGHTS

Advocacy

- The Public Affairs Department spent a significant amount of time working to ensure that reproductive health care was included in any federal health reform package, and essential community providers like Planned Parenthood were included in plan networks.
- We fought against the Stupak Amendment to health care reform – an amendment that would have banned abortion coverage for women in Health Insurance Exchanges, even if they use their own money to pay for that portion of the coverage. We were successful in preventing a similar amendment in the Senate version of health care reform.
- At the state level, Public Affairs led the successful campaign to protect our state family planning program, Family PACT, from budget cuts.
- On Capitol Day we took 95 teens, board members, staff, and volunteers to Sacramento for a day of lobbying and advocacy.
- We met with local elected officials and their staffs to discuss our services, licensing legislation, the state budget and our opposition to a spending cap.
- We launched Healthy Neighborhoods Outreach, a patient recruitment program that reached 3,400 households in City Heights. Once a month, teams of volunteers went door-to-door educating the community about Planned Parenthood's services with a special emphasis on our preventive services, parenting classes and educational presentations.



2009 began with a welcome change in the White House. President Barack Obama made several positive changes that advanced the cause of reproductive rights.

- The Global Gag Rule was repealed.
- The Obama administration moved to rescind the HHS Conscience Rule, a “midnight regulation” issued in the waning days of the Bush administration to harass family planning clinics.
- President Obama’s budget proposed that sexuality education programs be “evidence-based” in order to receive federal funds, thereby removing funding for abstinence-only sex ed programs, which have proved ineffective.
- The Obama administration extended our Medi-Cal family planning waiver until September, and later signed legislation to make the waiver permanent, thereby ensuring a steady stream of federal funding for family planning.

Advocacy Actions

Postcards.....	15,024
Phone calls.....	2,917
Faxes/Emails.....	793
Lobbying visits.....	61



Patient Story



Genevieve

Dear Molly,

I want to thank you and the wonderful staff at Planned Parenthood for the time and attention you gave me during my visit last week.

When I showed up at your center, it was the worst day of my life. My doctor had just broken the devastating news that my pregnancy was not progressing normally, a blighted-ovum he called it, and could not be carried to term. He referred me to Planned Parenthood for an abortion, and suggested my husband and I try again. I was absolutely heartbroken. We had already started planning our future, thinking about baby names and colors for the nursery. I even bought a little hat for my winter baby.

Your clinic staff was kind and compassionate. They were also able to deliver the greatest news I could ever hope for. After several ultrasounds and tests, your staff discovered that I did, in fact, have a normal, healthy pregnancy! I am so grateful that you took the extra time to help me see this crisis through to a happy ending.

Genevieve M.



Thank You

2009 Donors

Every attempt has been made to ensure accuracy in the donors list. However, in compiling such a list, omissions and misspellings sometimes occur. Please advise us of any errors. We appreciate the opportunity to correct our records. To make corrections, please call the Development Department at 619-881-4626, or email mveta@planned.org.

Margaret Sanger Circle

K. Andrew Achterkirchen
 Roberta Allen
 Irene W. and Guy L. Anderson
 Children's Foundation
 Drs. Richard and Rita Atkinson
 Blue Shield of California
 Foundation
 Deborah G. Carstens
 Guy C. Clum
 Cecelia H. Dunne
 Elisabeth (Jinx) Ecke
 Lizbeth Ecke and Paul Meyer
 Paul Ecke, III and
 Julianne Hampton
 Sarah Ecke May Family
 The Paul and Magdalena Ecke
 Poinsettia Foundation
 Herb and Paula Engel
 Susanna and Michael Flaster
 Joan and Eugene M. Foster
 Bobbie and Jon Gilbert
 Enid and Martin Gleich
 Beverly Grant
 George Hecht
 Theodora Ives
 Sharon and Joel Labovitz
 Legler Benbough Foundation
 Tracy and Chris Loughridge
 The Parker Foundation
 PPFA
 Price Charities
 Marisa and Bill Rastetter
 Riverside Community
 Health Foundation
 The San Diego Foundation
 Strauss Family Foundation
 Diana Strauss Casey
 Kathleen L. Strauss, Ph.D.

Paul and Anita Strauss
 United Way of San Diego County
 Molli and Arthur Wagner, Ph.D.
 Katherine D. White
 Sheryl and Harvey White
 The Sheryl and Harvey
 White Foundation
 Dr. and Mrs. Michael Ziegler

Patron Circle

Joan Bernstein
 Betty Beyster
 Beyster Family Foundation
 Catherine and Phil Blair
 Drs. Lisa Braun and Jeffrey Glazer
 LaVerne and Harold Brown
 Barbara Bry and Neil Senturia
 Dr. Clifford and Carolyn Colwell
 Valerie and Harry Cooper
 Jennifer Dreyer
 Jackie and Stan Drosch
 Dr. Charles C. and
 Sue K. Edwards
 R. Elaine Hanson, M.D. and
 Bruce A. Robbins, M.D.
 Rosanne and Joel Holliday
 Joan and Irwin Jacobs
 Drs. Stacy and Paul Jacobs
 Alan and Nora Taylor Jaffe
 Linda and Mel Katz
 Local Independent Charities
 John Moores, Sr.
 Sara Moser
 Ellen and Coleman Mosley
 Vera and John Pardee
 Clarice and Bill Perkins
 John G. Pitcairn
 Planned Parenthood Friends

Julie Ruedi and
 Robert Engler, M.D.
 Charles E. Sanders and
 Gabriella Carrillo-Sanders

Benefactor Circle

Betty Amber
 Rhonda Amber
 California Bank & Trust
 Theresa and Ted Clowes
 Community Health Charities
 Daniel and Nancy Donoghue
 Marion Eggertsen
 Juliet Ellery
 John and Denise Ford
 Drs. Edward and Joy Frieman
 Deborah and Donald Halliday
 JustGive.Org
 Martin and Terry Klitzner
 Jane and Jeffrey Marks
 Dr. Maggie and Mr. Paul Meyer
 Bryce E. Miller, M.D.
 Dr. Laurie Mitchell and
 Mr. Brent Woods
 Andrea and Gregory Moser
 Elizabeth Wall Ralston
 Joyce and Rick Ross
 Maxine Snyder
 Beryl E. Young

President's Circle

Linda M. and Dan Allen
 Delsee and Steve Altman
 Mona Baumgartel and
 John DeBeer
 Marty Block
 Ronald J. Bloom
 Julie and Noah Bretz
 Daniel and Althea Brimm

Lynn and Michael Bruser
 Robert and Yuko Burkett
 Anita Busquets
 Bob and Susan Brogi
 Harry and Sandra Carter
 Center for Community Solutions
 Gale Chan
 Donald and Karen Cohn
 Drs. Theodore and Jean Cohn
 Steven and Carolyn Conner
 Charles Dicken
 Marion Dixon
 Len and Kim Dodson
 Daniel Dotson and
 Kimberly Dotson
 Marlene Y. Ebert
 Dr. Bernard Eggertsen and
 Ms. Florence Nemkov
 Emily and Daniel Einhorn
 Naomi and Al Eisman
 Sue Elam
 Donna Jill Ellis and
 C. Judson Westover
 Mary Ann and Bud Emerson
 Jack Epstein
 Phyllis Epstein
 Cynthia D. Erb
 Sunni L. Farkas
 Pauline and Alan Fatayerji
 Anne and David C. Fege
 Diane and Elliot Feuerstein
 Foundation for Change
 Minoru Fukuda, Ph.D.
 Murray and Elaine Galinson
 Susan and Steven Garfin
 Drs. Lawrence M. and
 Carol B. Gartner
 Dr. Peter Geiduschek and
 Joyce Geiduschek
 Lee and Frank Goldberg
 Lu Ann Hall and Allen Sweet
 Alexa K. Hirsch
 Barbara F. and
 Kenneth D. Holland
 Holland's Bicycles
 Elaine and Albert Holm
 Maryka and George Hoover
 Scott Horsley

Anthony and Louise Huang
 Marla and John Jensen
 Rudolph A. Johnson, III
 Sonja F. Jones
 Michael Kaehr and
 Nancy Olmsted Kaehr
 Kaiser Permanente
 Charles and Gina Kakos
 Jerald and Marge Katleman
 Julia Kenyon
 Bill and Suzann Leininger
 Lois H. Lewis
 Karen and George Longstreth
 Edward and Nancy Lyon
 Leanne Hull MacDougall and
 Dr. Donald Dalessio
 Susan and Peter Mackauf
 Debra Madden
 David and Patsy Marino
 Marcia and Michael Martin
 Betty J. Mason
 Nathan McCay
 Ann McGowan-Tuskes
 Christa M. McReynolds
 Laura and Eric Michelsen
 Scott W. and Jean Molentin
 Edith Helen Monsees
 Margaret Moody
 Neighborhood Unity Foundation
 Timothy and Jennifer O'Connell
 Cynthia and George Olmstead
 Gayle D. Paddison
 Catherine Palmer
 Drs. David and Catalina Preskill
 Maurice Rapkin
 Riverside Arts Council
 Ted Robinson
 Dr. Linda Rothschild and
 Dr. Salah Baouendi
 San Diego Coastkeeper
 San Diego LGBT
 Community Center
 Bob and Sheryl Scarano
 Dr. Jerry Schneider and
 Elaine Schneider
 Jocelyn Schultz
 Kenneth and Mary Lou Schultz
 Dr. Stephen and Jill Seagren

Sempra Energy Employees
 Annette Seppanen and
 Curtis Nelson
 Sharp Health Plan
 Allison and Robert Price
 Elizabeth and William Sherry
 Jan and Ken Shipstead
 Abby Silverman Weiss and
 Ray Weiss
 Charles B. Smoot
 Keren Stashower and
 Ronald Marcus
 Dorothy Stein
 Ruth Stern
 Dr. Rosemary George Straley
 Paula Taylor and Bernard Kulchin
 Lisa Walters-Hoffert
 Drs. Linda and
 Stephen Wasserman
 James and Kathryn Whistler
 Judith L. White
 Barbara Wolter and Ray Skoff

Sponsor Circle

Katherine R. Albitz
 Jeffrey and Delsee Altman
 Judith M. Anderson
 Toni Atkins
 Joyce F. Axelrod
 Jean Bark
 Bruce and Patricia Becker
 Barbara Bloom
 Bernys Jo Borun
 Dr. William Boyce and
 Lorraine Boyce
 Sophie Brody
 William Bullitt
 Jill and Jack Campbell
 Ann M. Carmel
 Michael and Sheila Cole
 Council of Community Clinics
 Yvon Dacayana
 Stephanie Densmore and
 Thomas Jackson
 Dr. William DeRisi and
 Ruth DeRisi
 Linda A. Dovydaytis
 Edison International

G.T. Edmiston
 Dr. Max Elliott and Melissa Elliott
 John Elsner
 Dr. Steven Feitelberg and
 Karen Feitelberg
 Cameron Fosterling and
 Ernie Schnepf
 Charles and Lynn Gaylord
 Martha Gilmore
 Goodrich, Rohr Employees'
 Will-Share Club
 Delores L. Gordon
 Dr. and Mrs. Leonard J. Gosink
 Laurel Henderson
 David Hodges
 Mr. and Mrs. John Horn
 Alice Jacobson
 Labor Council, AFL-CIO,
 San Diego-Imperial Counties
 Dawn Lawson
 Betsy Lehman Levisay
 Arleen Lettas
 Yolanda and Dana Levy
 H. Evelyn Lustig
 Sarah Mattson Weller
 Courtenay McGowen
 Catherine H. McMahan
 Ann Menachery
 Katherine W. Merten
 Norma Ojeda, Ph.D.
 Pauma Band of Mission Indians
 Thomas and Ellen Payzant
 Dr. Patricia D. Peterson
 Pfizer, Inc.
 Penelope Phillips
 Mildred Pilot
 Ann Pumpian
 Dawn Puraty
 Joan and Robert Reese
 Robin S. Roulette
 Run Women Run
 Loni Rush
 Patricia Ryan
 Christy and Timothy Saltonstall
 Nancy and Donald Sandweiss
 Laura Screen
 Erin Searfoss
 Veronica J. Seay

Judith Sherman
 Peggy and Donald Spanninga
 Deanna and Richard Spehn
 Dr. Roger Spragg and
 Carole Spragg
 Linda T. Stetson
 Drs. Jeanne P. and
 Donald D. Stevenson
 Harold and Emilie Stone
 Timothy P. Taylor
 Nancy Tietge
 United Way of Greater
 Battle Creek
 United Way of Los Angeles
 Samuel and Michele Ward
 Max and Pat Warren
 Cindy Weigle
 Jane Weiss
 WellPoint Foundation
 Sarah White and David Gray
 Christopher and Elisabeth Wills
 Peter and Donna Worcester
 Wendy Youngren
 Jan Zachry

Advocate Circle

Gus Abadjis
 Henry Abarbanel and Beth Levine
 Dr. Roberto and
 Mrs. Susana Abdelnur
 Lisa Haulf Adams
 Adele Abrahamsen and
 William Bechtel
 Anstes V. Agnew
 Harold and Beverly Agnew
 Megan Ahn
 Daniel and June Allen
 Diane Allen
 Ethelyn M. Allison
 Deena Altman
 Kristen Amicone
 Betty Anderson
 Edward L. Anderson
 Kaitlin M. Astleford
 Thomas and Elizabeth Atchison
 ATT
 Steven Babineau
 Dr. Jim Back

Drs. Varda and George Backus
 Barbara Baehr
 Elizabeth S. Bagby
 Sara S. Baird
 Florence W. Baldwin
 Thomas Baldwin and
 Miriam Ziegler
 Bruce Balog
 Nadine Bangsberg
 Michael and Arlene Bardin
 A.H. Bark
 Walter and Marion Barrett
 Anne R. Barry
 Sandra D. Barstow
 Teresa A. Barth
 Jarka Bartl
 Joyce Bassett
 Lee and Tonia Bates
 Rand and Susan Batterton
 BD Matching Gift Program
 George and Constance Beardsley
 Mary L. Bebe
 Tina Becharas
 Adam Behr
 Mr. and Mrs. David Beith
 Marsden Benepe
 Laura Berend and Bill Zeigler
 John and Margot Berg
 Jacqueline Bergseid
 Isaac Berk
 Sondra and Robert Berk
 Lisa Berlanga
 Raymond Berzinski
 Lois M. Bevins
 Michael Biberstein
 R. Alan Bieler
 Charles and Charlotte Bird
 Susan J. Blackwell
 Ann S. Block
 Barbara Blomgren
 Sherry and Martin Bloom
 Debbie Blum
 Beverly Boggs and Ron Newby
 Dennis Bolanos
 Celine Bonnefous
 Tanya Boyaniwsky
 Jane Boyd
 Matthew Brady

Sandy Braff
 Hortensia Bram
 Rob Branch and Carol Bussy
 George and Miriam Brewster
 Alton and Stefana Brintzenhoff
 Jo Brooks
 Frank A. Brown
 Houston Brown
 Joseph and Jean Brown
 Kapualani B. Brown
 Maureen and Charles Brown
 Pauline and Edwin Brown
 W.J. and Barbara A. Browne
 Steven Brozinsky, M.D.
 Gregory Bruell
 Elizabeth E. Bruton
 Margaret Budd
 Dan B. Buker
 George and Karen Bullette
 Jill Burkhardt and Bill Vornsand
 Henry and Linda Burks
 Harry Butler
 Betty Byrnes
 Mara Caler
 Mary Ann Calhoun and
 Scott Francis
 Mary Camphuis
 Linda and Edgar Canada
 Todd Cardiff
 Kristin Carmona
 Jan Carpenter
 Christopher and Molly Carpenter
 Dr. John M. Caruthers
 Stephanie Casenza
 Judy Cater
 Kerry and Paisley Cato
 Center for Policy Initiatives
 Debra Chaddock
 Lynne Champagne
 Dean N. Chantiles
 Phyllis Charlton
 Christine Chatfield
 Susan and Stephen Childs
 Mary Chipps
 Jon and Sally Christensen
 Vickie L. Church
 Linda Cisco
 Sally Clark
 Timothy Clayton
 Anne M. Clifford
 Susanna E. Coade
 Barbara Cogburn
 Lindsey Cole
 Jana Collier and Chris Nordby
 Dr. and Mrs. David Collins
 Ronald and Nancy Collins
 Claudia Comins and
 Robert Friedman
 Community Service Association
 Dr. and Mrs. Steven Constable
 Mr. and Mrs. Joe Contreras
 Lois J. Conway
 Pamela A. Cooke
 Penny Cooper-Francisco and
 Chet Francisco
 Amy Corton and Carl Eibl
 Matthew Costello
 Jay D. Coulter
 Heather Cowan
 Maryruth Cox
 Jill Crane
 Jacqueline Crowle and
 Charles Scott
 Mary Cruz
 Carol and Pedro Cuatrecasas
 Joan P. Cudhea
 Nicole Dabish
 Dr. Pamela H. Daener
 Terrance and Rachel Daly
 Norma Damashek
 Linda Daniels
 Berta B. Darr
 Terry Darton
 Karen Davies
 Lee and Barbara Davis
 Susan C. Davis
 Suzanne De LaVergne, Ph.D.
 Jeffrey DeJong
 Gilbert Del Toro
 Martha G. Dennis
 Judith deNooy
 Aura DeTrinidad and
 Benjamin Greenberg
 Hannah L. Devine
 Richard Dial
 Keira K. Dillon
 John and Susan Dilustro
 Ellen Dodson
 David and Kathleen Downs
 Jeanine Dreifuss
 Daniel P. Drogichen
 Mitchell and Julie Dubick
 Richard E. Dubielzig
 Dawn Ducharme
 Dr. Russell and Mrs. Eloise Duff
 Erin Dunn
 Robert and Jean Durgan
 Eagle Marketing Services, Inc
 Glen and Marcia Eastman
 Susan Ebner and Jack Farnan
 Arthur and Sharon Ecker
 Byron and Marcia Edwards
 William Eiffert and Leslie Hodge
 Ronald L. Endeman
 Jane Engelman
 Devon Ericson
 Jeane F. Erley
 Lynn Escajeda
 Amy N. Esposito
 Cynthia Evans
 June S. Ewing
 Dorthy Ann Fanestil
 Roberta Fannin
 Karyn Farr
 Rhonda and Nigel Farrar
 James Fenningham and
 Janet Arnold
 Mary Ellen Ferguson
 Lee Ferris
 Lois S. Fetzter
 Fidelity Chairtable Gift Fund
 Lea Fields-Bernard
 Dr. and Mrs. Seymour Filman
 Dr. Irving Fine
 M.G. Finn
 John and Kathleen Finnell
 Bambi Lin Finney
 First Unitarian
 Universalist Church
 Gaylene Fisch
 Marta L. Fisch
 Cissy Fisher
 Lisa Fisher and David Held
 Nettie and Manuel Fisher

Peggy Fisher
 Jerry and Barbara Fitzsimmons
 Judy and Ted Fitzsimmons
 Drs. Jacquelyn and
 John Flaskerud
 Karen Fleming
 Jeff Flynn
 Stacy Fode
 Dr. and Mrs. Michael H. Forman
 Velia M. Fowler
 Laurie Fox
 George and Lucy Franck
 Kathryn A. Frasca
 Marion Garver Fredrickson
 Charles Freedman, M.D.
 Linda Freeman
 Sherley Freudenberger, M.D.
 William Friedel
 Lawrence Friedman
 Dr. and Mrs. Paul J. Friedman
 Jessica Fripp
 Deborah Fritsch and Pat Boyce
 Millicent Froehlich
 Dr. and Mrs. Arnost Fronck
 Dr. Theodore E. Frost
 Nancy C. Gall
 Robert and Donna Gans
 Rosette Garcia
 Drs. Edwin and Wita Gardiner
 Cristine C. Gatto
 Gretchen M. Gerlach
 Darlene and Eugene Gerow
 John and Mary Giebink
 Mary Sue Gladstone
 Mary Ann Glatt
 Shelby P. Goad
 John Goar
 Cynthia J. Godinez
 Steven Golbus, M.D.
 Dr. and Mrs. Norman Goldberg
 Andrew Golden
 Arlene Golds
 Dr. Deborah Goldsmith
 Rabbi Lisa L. Goldstein
 Martha P. Gonzalez
 Edwin and Donna Gookin
 Dr. and Mrs. Bernard Goott
 Civia Gordon
 Gerda Gordon
 Melissa Gordon
 Dr. and Mrs. John Gorham
 Ann Gould
 Susan H. Goulian
 Jerri and Thomas Grady
 Vicki D. Granowitz
 Jacqueline Gray
 John Gready
 Steven A. Green, M.D.
 Alice Greene
 Cindy L. Greene
 Joshua Greunberg
 Carol L. Grimes-Gartland
 Gloria Gudmundson
 Nannette H. Guerin
 Kay and Bill Gurtin
 Ruth Ann Hageman
 William B. Hale
 Daniel and Caroline Hamlin
 Daniel and Shelley Hammer
 Constance Hanley and Jim Smith
 Janet Hanpeter
 Heidi S. Hansen-Dougherty
 Mark and Karen Hanten
 Susanne Harmatz
 Stephen B. Harris, Ph.D.
 Kay and Phillip Harry
 Jacquelin B. Hart
 Helen Hatfield
 Brian Haubenstock and
 Lori Shearer
 Peggy and Stanley Hayward
 Richard Heckman
 Joyce L. Hein
 Dr. and Mrs. Donald Heinrich
 Susan and Walter Heiser
 Dagmar and James Helgager
 Diane Helland
 Joan Helland
 Richard and Joan Heller
 Margo Hemond
 W. W. Henderson
 Joan Henkelmann
 Mary Lou Henry
 Dr. Bonnie Hepburn
 Ms. Zoe Herald
 Dr. Laura Hershey
 Dede Herst and
 Dennis Cook, M.D.
 Karla Hertzog
 Hewlett - Packard
 Hewlett Packard Corporate
 Albert and Joanne Hill
 Linda Hill
 Henry and Jeanne Hirshfield
 David Hitchcock
 Gayle and Charles Hodges
 Katherine Hodges
 Lois B. Hodik
 Ann M. Hoepfner
 David and Corrine Hollings
 Darold and Virginia Holten
 Jane Hopf
 LeeAnn Hoshaw
 HP Company Foundation
 Patricia Hrycyszyn
 Jody Hubbard
 Susan M. Hunt
 Virginia Huschke-Brown
 Doris J. Huxford
 Virginia Hyde
 David and Therese Hymer
 IBM Employee Services Center
 Kenji and Leslie Ima
 Shirley Imber
 Camilla L. Ingram
 Margaret and Wesley Ishikawa
 Clarice Jackson
 Beth Faber Jacobs
 Pat JaCoby
 Margareta Jansson
 Ken and Andrea Joerden
 Marileen Johnson
 Nancy Johnson
 Sabrina Johnson
 Victoria Johnson
 Eleonore A. Jones
 Marilyn C. Jones, M.D.
 Michael E. Jones
 Oliver H. Jones, Jr.
 Robert and Linda Juhasz
 Galen Justice
 Laurene Kallstrom
 Kim Kane and Dean Peabody
 Dr. and Mrs. Lee Kaplan

Dori and Charles Kaufman
 Beth Ann Kelso
 Andrew Kennedy
 Linda Kennedy
 Susan L. King
 Jessica Kingston, M.D.
 Kathleen D. Kirkpatrick
 Sheila Kirshenbaum
 Patricia H. Klaasen
 Janet Klauber
 Philip M. Klauber
 Robert and Evelyn Klees
 Carol Klepper
 Joe Knepper
 Carrie Knowles-Law
 Alex and Claire Kononchuk
 Bryna Kranzler
 Ellen Kroninger
 Kenneth and Barbara Kubarych
 Dr. Mary Ann Kurinovich
 Merle Kurzrock
 Mr. and Mrs. Theodore Kwoh
 Elizabeth Lancaster, M.D. and
 Eli Shefter, Ph.D.
 Ruth Landaal
 Cynthia Lane
 Dianne E. Lane
 Diane Langford
 Elizabeth Lasley
 George and Carol Lattimer
 Ed and Betty Law
 Claudia Law-Greenberg
 Robin M. Layton
 Jane G. Lazerow
 Jeffrey Leach and
 Patricia Keith-Leach
 Ernest P. Ledterman
 Robert Lee
 Joanne G. Leidenberger
 Joel Lench, M.D.
 Candice Lenney
 Bonnie Lennon
 Lisa Leondis
 Mr. and Mrs. Marshall Lewis
 Merle K. Lewis
 Perry W. Lieber, III
 Donald Lindburg
 Jacqueline Loaiza

Hamilton M. Loeb
 Paul Lonac and Peggy Keigher
 Ben and Susanna Lopez
 Marge Lorang and John Spinosa
 Keith R. Loss
 E. Bruce Love
 Harold and Joan Luce
 Nina P. MacConnel
 Alan MacDougall and
 Josph Judge
 Sara MacGregor
 Michele Macosky
 Charles and Cathy Mador
 Dr. Henri Maget and
 Elizabeth Rice Maget
 Meryl Maneker and Peter Herman
 Di Marcus
 Nancy Marlin and Fred Kolkhorst
 Roswitha Marouf
 Kathleen Marquette
 Terry A. Marsh
 Barbara and Norman Marshall
 Margaret Marston
 Doreen D. Martin
 Lois K. Martin
 Iris P. Masotti
 Katherine E. Matheron
 Robert F. Mathers
 Kimberlee Matzinger
 Jill W. Maxim
 Henry E. McAdams
 Music McCall
 Eleanor McCardle
 Gloria McCarter
 Kathryn McChesney
 Janet McClure
 Hollace McCormick
 Mr. & Mrs. Harry McCune, Jr.
 Dr. and Mrs. J. A. McCutchan
 Judy McDonald
 Eric McDuffie
 Christopher McEniry
 Louis McGlasson
 Jan McMillan
 Rachel McRoberts
 Kathy Meagher
 Susan D. Medak
 James D. Mees

Everett C. Mehner
 Carmalettia Menas
 Tatsumi M. Mercer
 Kristen Meyer
 Linda and James Michael
 Jennifer A. Michna
 Dennis Miller
 Sally S. Miller
 Mary Millet
 Judith A. Mills
 Nelson Millsberg
 Masao Miyoshi
 Alethea Moeller
 Martha Moffett
 Henry and Constance. Moore
 Margaret P. Moore
 Jane C. Moores
 Mike Morehead and Ed Miller
 Donald and Rita Morgan
 Robert and Joany Mosher
 Julie C. Moss
 Chandra Mukerji
 Garna G. Muller
 Deborah C. Mulvey
 Edie Munk
 Dr. Walter Munk
 Maggie and Wayne Myers
 Pauline Nachbar
 Dr. and Mrs. Charles Nager
 Gary and Denise Nakamura David
 National Organization For
 Women, San Diego
 County Chapter
 Joy Naughton
 Scott and Julie Nearingard
 Jeff Nelson
 Mary C. Nelson
 Dr. Robert and
 Mrs. Barbara Nemiroff
 Carolyn Nespolo
 Network for Good
 William and Tracy Neumann
 Mia Neustein
 Catherine D. Nicholas
 Matthew Nieder
 Janie A. Noon
 Sherry Nooravi
 Sharon Novak

Dr. William and
Mrs. Christine Nyhan
Candace B. Obetz
Nanci Oechsle
Doraine B. Offerman
Michael T. O'Halloran and
Margaret M. Mann
Ellen O'Neal
Shawn O'Rafferty
Donald J. Orahood
Laurie Orange
Elizabeth Orr
Padre Janitorial Supplies
Paul and Carolyn Page
Mark Parisi and Mary Johnson
Donna Parker
Edith Parker
Laura H. Parsky
Hugh Pates
Charles and Marilyn Perrin
David Petry
Rio H. Phair
Sandra K. Piccillo
Jill Pierce
Lorraine Pillus
David and Sandra Polster
Marlene Pommerenke
Ann Poppe
Heinz and Beth Poppendiek
Mrs. Ruth Potter
Sandra and Roger Prend
Dolores H. Pretorius
Kimberly Price
Mark and Teresa Price
Timothy Price
David Prickett and
Jill Davis-Prickett
Dr. and Mrs. David M. Priver
Robin Pruitt
Gayle and Phillip Pullano
Mary C. Qualls
Nancy Quesnell and Rich Carroll
Luanna H. Quirk
Ronald and Joyce Rabens
Peter and Jane Radatz
Vidhya Ramachandran
Carey G. Ramos
Claire Ramsey

Susan Randerson
Kathryn F. Rangus
Marylu and Walter Raushenbush
Joie and Larry Reavis
Marcia Reed
Debra L. Reid
Patricia M. Reilly
Kathleen M. Renne
Serge Rey and Janet Franklin
Arnold Rheingold
Sharon Rhodes
Minna and Michael Riber
Judith Richards
Dr. and Mrs. Mark K. Riedler
Michelle Ritz and William Chen
Patty Roe Robbins
Leslie Robins
Sheryl Lee Rock
Eleanor R. Rodney
Alice J. Rodriguez, Ed.D.
Carolyn L. Roeters
Colleen M. Rose
Robert and Wanda Rose
Barbara Rosen, Ph.D.
Frederica Rosenfield
Carmen Rosette Garcia
Anne L. Ross
Paula Rotenberg
Michael Rothmuller
Maria Rothschild
James Royle, Jr.
Leslie Rucker
Betsy and Lea Rudee
D. Richard and Jo-Ellen Rudolf
Gertrud P. Ruhle
Doris A. Rutherford
Patricia A. Rutledge
Barbara and Frank Ryan
Drs. Donald and Sonia Ryan
Elizabeth Saccone
Marcia Sachs
Gerrard and Brigitte Salomon
Barbara Saltman
Clarence and Deborah Salzer
Saundra Saperstein
Stacey Sasaki
Leslie Satz
Laurence and Phyllis Sawyer

Mary Lou Sayler
Anne Schafer
Barry and Linda Scher
Barbara Schmidt
Richard Schmitz and
Barbara Lavinio-Schmitz
Elizabeth Schock
Seana Scholtemeyer
Wayne and Diane Schroeder
Judy and Marc Schuckit
Jacqueline M. Schuller
Gabriel Schuyler
Margaret Z. Schwartz
Rosalie Schwartz
Ross and Audrey Schwartz
Craig Scott
Richard F. Seaman, Jr.
Earl and Ellen See
Robin Seigle
Kelly Seiler
Maria Seltzer
Melvin L. Selzer, M.D.
Dr. Majorie E. Seybold
Peter Shaw
Grace M. Sharkey
Jerome and Carolyn Sharpe
Joyce Shepard
Rebecca Sherrick
Steven and Janet Shields
Susan H. Shuchter, M.D.
Leslie Simon
Pamela Simpson
Susan Simpson
Esthr M. Singer
Ann R. Sixtus
Thomas A. Sklenar
Nanci Slayen
Lynne B. Small
Bonnie Smith
David D. Smith
Helen K. Smith and
Robert H. Smith
James H. Smith
Laura Smith
Stuart and Carol Smith
James E. Snodgrass
James Snow
Kwan-Lok and Miu-Lam So

Robbin Soderbery
 Soudabeh Soheili
 Herbert and Elene Solomon
 Sandra S. Somach
 Karen Sommers
 Dr. Trudy Sopp and
 Dr. Hayden Thomas
 Dr. and Mrs. Alan R. Spector
 Gerald Spector
 Melford and Audrey Spiro
 Patricia Springer
 Dr. and Mrs. Peter St. Louis
 Maureen A. Stapleton
 Rosalie Star
 Barbara Stark
 Claudia Roe Stein
 Nancy Stephens
 Carol L. Stern
 Charlotte Stern
 Dr. and Mrs. Charles Stevens
 Michele A. Stewart, M.D.
 George Straley
 Joyce and Ted Strauss
 Sherry A. Strom
 Susan M. Strom
 Elizabeth Studebaker and
 Bruce Reznik
 Patty Sullivan
 Stephen and Judy Sundquist
 Margery Swanson
 Susan E. Tanges
 Scott and Jodi Tatum
 Lou Terrell and Carol Isackson
 Robin Theilmann
 Alice Thomas
 Gail C. Thomas
 John Thomas
 Dr. and Mrs. Oliver Thomas
 Nancy Thompson
 Vicki Thompson
 Victoria F. Thompson
 Evelyn L. Thomson
 Cynthia K. Thornton
 Alma Timmins
 Marian Tisdale
 Daniel A. Todd
 Laurel Todd
 Paul and Marilyn Traum

Dr. Rochelle Treger
 Jim Treglio
 Neil W. Treister, M.D.
 Benjamin and Sheila Trovaten
 Eugene and Emily Troxell
 Truist
 Debbie Turnbull
 Rosie Turner-Marks
 United Health Group/
 Employee Giving Campaign
 United Way of Capital Region
 United Way of Delaware
 United Way of the Bay Area
 United Way of the Capital Area
 United Way of the Inland Valleys
 United Way of Washington
 United Way/AT&T Employee Gift
 Janet Vadakkuncherry
 Patricia M. Vainik
 Jaye F. Van Kirk
 Pieter A. Vandenberg
 Richard Vandervoort
 Larry Verity
 Steven and Kristen Victor
 Dr. and Mrs. Richard Wagner
 Joan L. Waite
 Kathleen Waldvogel
 Shirley A. Walkoe
 Ginita Wall
 Florence Warnock
 Dr. and Mrs. Thomas Warschauer
 Youko Watari
 Lowell Waxman
 Shirley L. Weaver
 Mae Weinstein
 Sharon Weintraub
 Judith Weiss
 Royce M. Weiss
 William and Margaret Wernett
 Donald and Judith Wesling
 Lona R. Wessel
 John Wheeler
 Chelsea D. White
 Jennie White
 Phyllis A. Whitfield
 Karin Whiting
 Sandra and Thomas Wiener
 Alan Wiley

LeAnn Williams
 Ruth Williams
 Winnie O. Willis
 Anne B. Wilson
 Catherine Wilson
 Michelle Lovo Wilson
 John and Karen Wingert
 Claire Wise
 Florence Berger Wolf
 Eric Wolfinger
 WRG
 Kaye I. Wynne
 Wallace Yagi
 Annette York
 Candace Young-Schult and
 Roy Schult
 Carlynne Yu
 Linda Zangwill
 Janet E. Zanville
 Alan Zieg
 Lora Zilinsky
 Allan Zirkin
 Kristin M. J. Zlotnik
 Susan and Paul Zlotnik

Bequests

Please consider including Planned Parenthood in your will. The following language has been developed for donors interested in including Planned Parenthood of San Diego & Riverside Counties in their wills:

“I give, bequeath and devise (dollar amount or description of asset) to Planned Parenthood of San Diego & Riverside Counties, now or formerly located at 1075 Camino del Rio South, San Diego, CA 92108, to be used for its general charitable purposes.”

Planned Parenthood of San Diego & Riverside Counties is a tax-exempt corporation. Any bequest is fully deductible for federal estate tax purposes. To plan a bequest for a specific purpose, please contact Mary Veta at 619-881-4626, or email mveta@planned.org.

Named Funds*

- Mildred & Burnett C. Wohlford
- Carol Ash
- Selby
- Edward O’Toole
- Carolyn Ann Ahlers
- Josephine Carey
- Annie Titlebaum-Schwartz
- Ann Baerwald
- Sandra Jeffers
- Leiffer Family Endowment Fund
- Louisa Kassler
- Ruth Campbell
- Anonymous
- Roger Shaw
- Barbara Ramsey & Sherry Henderson
- Catherine Dorgan
- Steven R. Prewitt
- Marcela Coolidge
- Ruth H. Milliken

- Yolanda Luney
- Jack Epstein
- Harold Rand
- Muriel Adams
- David & Pamela Carton
- Elisabeth Boyer
- Leslie Jane Hahn
- Michael B. Eddy
- Mary E. Harvey
- Anne S. Hertzberg
- Minna O. Cooper
- Thomas & Helen Slaven
- Margaret L. Caperton

- Amy Corton & Carl Eibl
- Darlee J. Crockett
- Jacqueline Crowle & Charles Scott
- Joan P. Cudhea
- Joan Davis
- Judith deNooy
- Charles Dicken
- Joan Dixon
- Marion & Frank[†] Dixon
- Marlene Y. Ebert
- Susan Ebner
- Elisabeth (Jinx) Ecke
- Margaret J. Elliott
- Herb Engel

Legacy Circle

- Anonymous (20)
- Hedy Aardema
- K. Andrew Achterkirchen
- Harry Allgauer
- Joyce F. Axelrod
- Sandra D. Barstow
- Laura Berend & Bill Zeigler
- Joan Bernstein
- Beverly Boggs
- Billie Bowen
- Lorraine & William Boyce
- William M. Bristow
- Cynthia C. Carpenter
- Richard & Julia Carson
- Eileen M. Clause
- Don & Betty Copp
- Patricia Cornelius

- Anne D. Ewing
- Suzanne Finch
- Fannie & Lewis Fisher
- Susanna and Michael Flaster
- Vaughdean Forbes
- Deborah Fritsch & Pat Boyce
- Marcy Goldstone
- Carol L. Grimes
- Kay & Phillip Harry
- Kae Hensey
- Ingrid Hibbin
- Rosanne & Joel Holliday
- David & Corrine Hollings
- Ruth Ireland
- Beth Faber Jacobs
- Margaret Jacobs
- Howard Jacoby
- Marla & John Jensen

Estate Gifts

- Martha Ann Klimo
- Lorenzo Dell’Armo
- Jon Olson
- Norma Sullivan
- Frances Miner
- William Plock
- Wheller Trust
- Mary Lou Swift Mantle
- Shirley Bell

* Planned Parenthood of San Diego & Riverside Counties offers a special thanks to those deceased donors whose generous bequests of \$100,000 or more created a permanent fund in support of Planned Parenthood’s programs.

Dori & Charles Kaufman
 Philip M. Klauber
 Frances Klipper
 Alva Lane
 Betty & Ed Law
 Vadee Lee
 Merle K. Lewis
 Dorothy Lindberg
 George & Karen Longstreth
 Tracy Loughridge
 Leanne Hull MacDougall
 Terry A. Marsh
 Alice McCauley
 Joseph & Betty McCosker
 Bryce E. Miller, M.D.
 Judith P. Miller
 Ree & Maurice Miller
 Sally S. Miller
 Mary L. Minshall
 Victoria L. Moody-Geissler &
 Richard Geissler
 Dana Mosser
 Jane Mullins
 Kathi W. Myers
 Donald J. Orahood
 Laurie Orange
 Catherine M. Orth
 Mr. and Mrs. Dewey Ostrom
 Leonard Pellettiri
 Helen M. Pendleton
 Dr. Patricia D. Peterson
 Robert Reese
 Judy Reynard
 Julian Rogers
 Anine Rohrer
 Ruth Rollins
 Dr. Beatrice Rose
 Nancy & Donald Ross
 Andrea H. Schell
 Elliot & Eileen Schubert
 Anna & Mario Scipione
 Nadine L. Scott
 Annette Seppanen &
 Curtis Nelson
 Elizabeth Sherry
 Helen S. Simmons
 Jan Slater

Max B. Southwick
 Sara Standerford
 Terri J. Stearns
 Dorothy Stein
 Kathleen L. Strauss, Ph.D.
 Stephanie Strout
 Kathryn Sturch
 Paula Taylor & Bernard Kulchin
 Marjorie Tess
 Verna Tinker Turner
 Kristen Victor
 Molli & Arthur Wagner, Ph.D.
 Judith L. White
 Marilyn & Stuart C. † Wilson
 Barbara Wolter
 Leslie S. Zoref

† deceased

List as of 12/31/09



First Avenue



Carlsbad



Chula Vista



City Heights



Coachella Valley



College Avenue



El Cajon



Escondido



Euclid Avenue



Kearny Mesa



Mira Mesa



Mission Bay



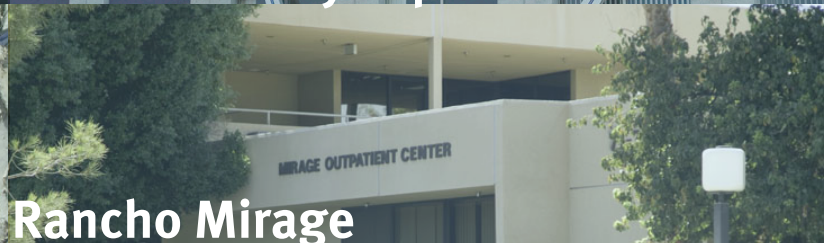
Moreno Valley



Mission Valley Express



Pacific Beach Express



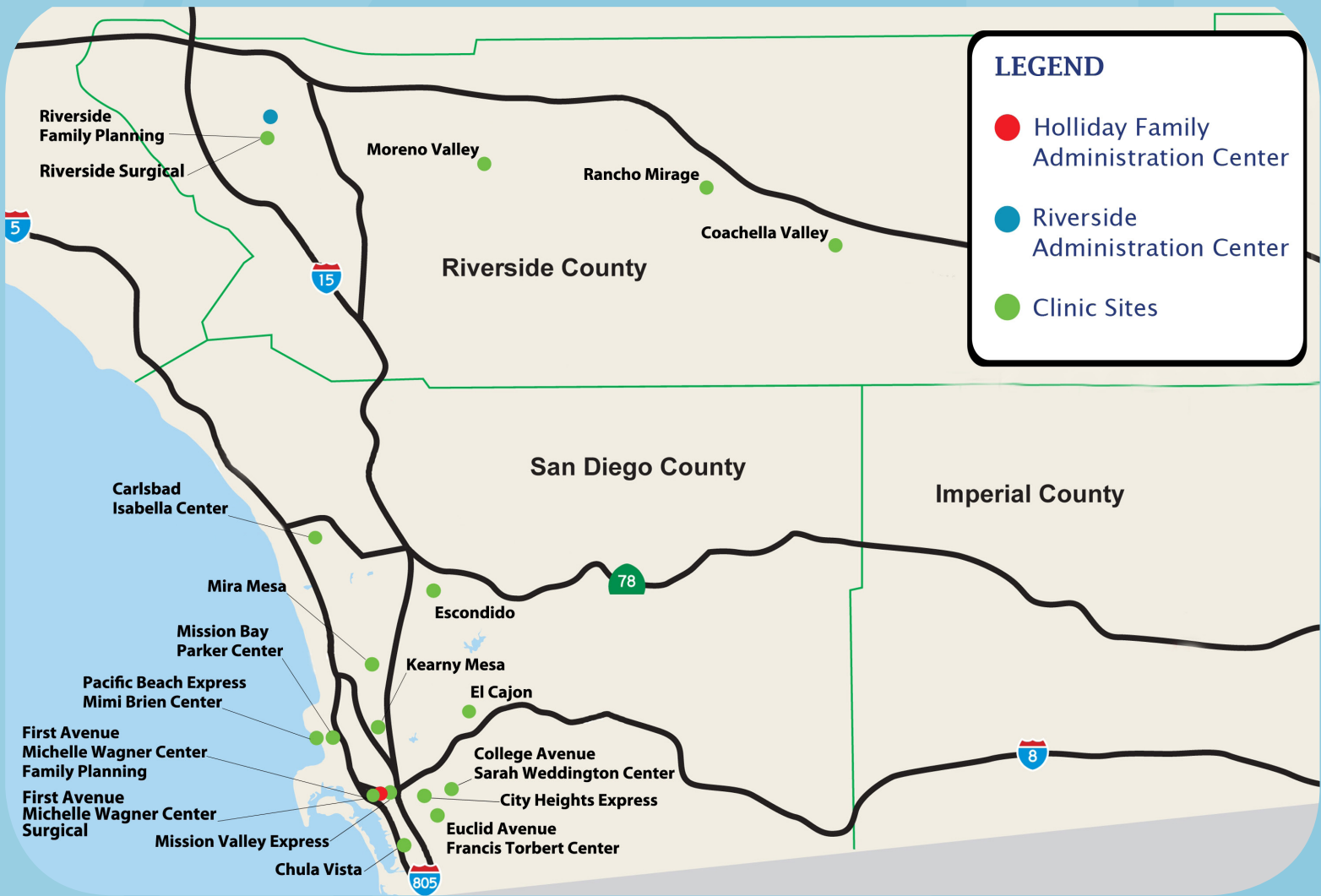
Rancho Mirage



Riverside

Planned Parenthood® | WE'RE HERE.™

Planned Parenthood of San Diego & Riverside Counties Administration and Health Centers Map



**Planned Parenthood of San Diego & Riverside Counties
Annual Report 2009**

ADMINISTRATIVE OFFICES

**Holliday Family
Administration Center**
1075 Camino del Rio South
San Diego, CA 92108
619-881-4500

Riverside Administration Center
3845 10th St.
Riverside, CA 92501
951-222-3126

SAN DIEGO COUNTY & RIVERSIDE COUNTY HEALTH CENTERS

For appointments, please call 1-888-743-7526 (PLAN)

Carlsbad Isabella Center
1820 Marron Rd., #110
Carlsbad, CA 92008

Chula Vista
1295 Broadway, #201
Chula Vista, CA 91911

City Heights Express
4305 University Ave., #350
San Diego, CA 92105

Coachella Valley
49-111 Highway 111, #6
Coachella, CA 92236

**College Avenue
Sarah Weddington Center**
4575 College Ave.
San Diego, CA 92115

El Cajon
1685 E. Main St., #301
El Cajon, CA 92021

Escondido
347 W. Mission Ave.
Escondido, CA 92025

**Euclid Avenue
Francis Torbert Center**
220 Euclid Ave., #30
San Diego, CA 92114

**First Avenue
Michelle Wagner Center**
2017 First Ave.
San Diego, CA 92101
Family Planning: Suite 301
Surgical Services: Suite 100

Kearny Mesa
7526 Clairemont Mesa Blvd.
San Diego, CA 92111

Mira Mesa
10737 Camino Ruiz, #220
San Diego, CA 92126

Mission Bay Parker Center
4501 Mission Bay Dr., #1C
San Diego, CA 92109

Mission Valley Express
1333 Camino del Rio So., #306
San Diego, CA 92108

Moreno Valley
12900 Frederick St., Suite C
Moreno Valley, CA 92553

**Pacific Beach Express
Mimi Brien Center**
1602 Thomas Ave.
San Diego, CA 92109

Rancho Mirage
71777 San Jacinto Dr., #202
Rancho Mirage, CA 92270

**Riverside Family Planning
& Surgical**
3772 Tibbetts St.
Riverside, CA 92506