

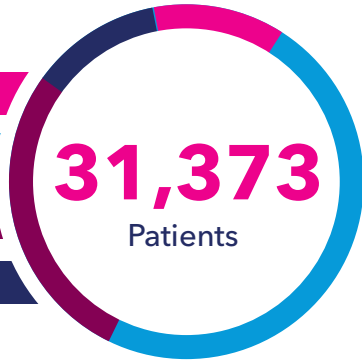
Annual Exam

FY 2023: July 1, 2022 - June 30, 2023



Patient Age Distribution

- Teens: 12%
- 20s: 49%
- 30s: 27%
- 40s+: 12%



- 16,823 visits
- 11,343 visits
- 9,808 visits

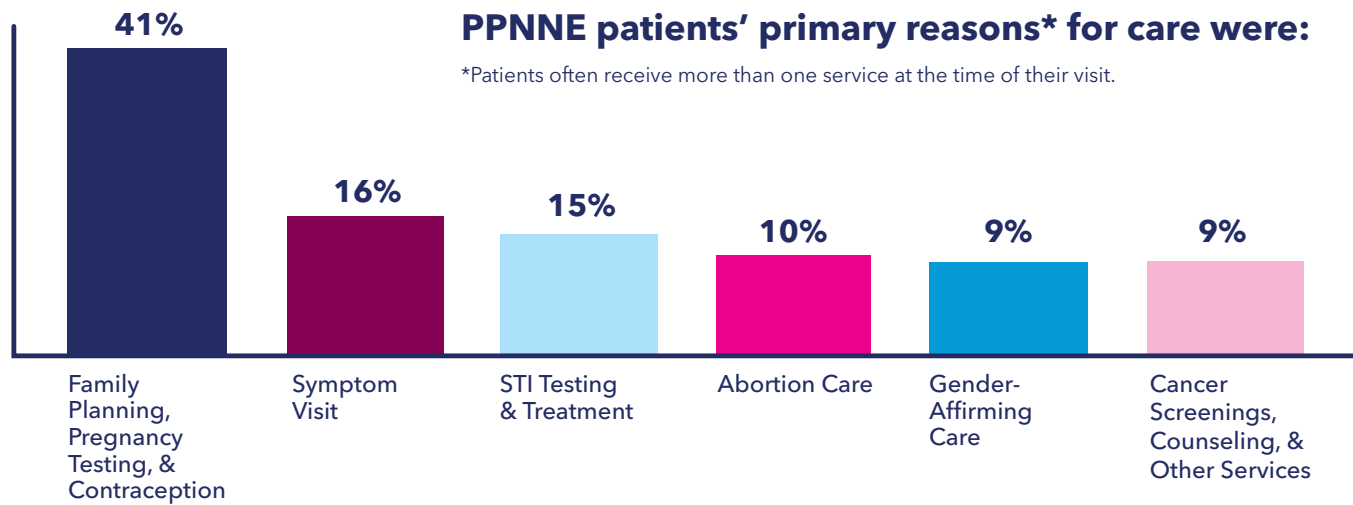


4,546 of our visits were provided through **telehealth**.



56% of our patients had **low incomes**.*

*Low income is defined as less than twice the Federal Poverty Level, or \$29,160 for a household of 1.



Visit www.ppnne.org to learn more about health care, education, and advocacy.

Your support makes it all possible.

260,240

Supporters

11,384

Donors

14,600

Activists

265

Volunteers

205

Staff Members

15

Health Centers

1 Mission

To provide, promote, and protect access to reproductive health care and sexuality education so that all people can make voluntary choices about their reproductive and sexual health.

Activist: someone who attended an event or has taken an action in the past year.

Volunteer: someone who has volunteered at an event at least two times in the past year.

Donor: someone who made a financial gift in the past year.

Supporter: someone in our database who supports our issues.



Thanks to our generous donors, we provided nearly:

\$4 million

worth of **discounted** and **free** health care to our patients.

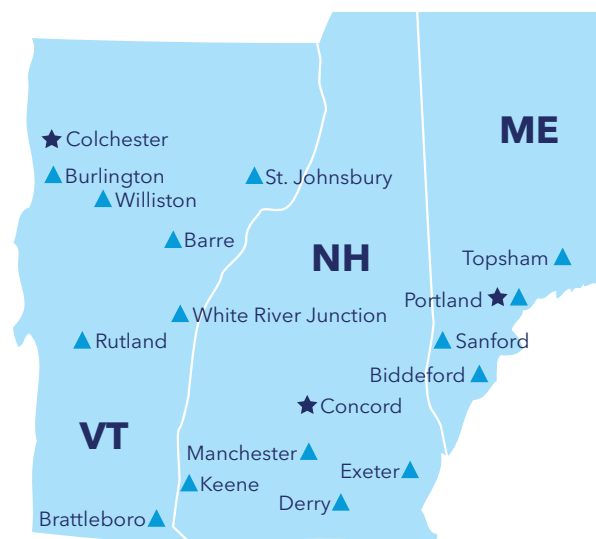
At PPNNE, we believe that we all have the right to...

- high quality health care and the ability to provide it without fear of harassment and violence;
- a voice in decisions that affect our families and our lives;
- comprehensive knowledge about our bodies and sexual health;
- decide the most basic and fundamental question: when and whether or not to become a parent;
- make decisions about childbearing free of government intrusion

... regardless of race, gender, age, sexual orientation, disability status, income, or zip code.

Patients can access our care in-person at one of our 15 health centers or virtually through our Telehealth program.

PPNNE also has a statewide presence across Maine, New Hampshire, and Vermont in outreach, engagement, and advocacy.



▲ PPNNE Health Center ★ Central Administration

Patients can access our care in-person at one of our 15 health centers or virtually through our Telehealth program.

784 Hercules Dr., Suite 110, Colchester, VT 05446 | 1-800-287-8188 x9704
18 Low Ave., Concord, NH 03301 | 1-800-287-8188 x9704
443 Congress St., 3rd Floor, Portland, ME 04101 | 1-844-245-9388

Planned Parenthood
of Northern New England