

# 2020 Annual Exam

## Maine, New Hampshire, & Vermont

January 1 - December 31, 2020

SPECIAL  
COVID-19  
EDITION

Planned Parenthood of Northern New England (PPNNE) had to significantly adapt during the COVID-19 Pandemic. **But with crisis, came ingenuity and innovation, and we've remained open and there for our patients through it all.**

### NEW PROGRAMS & MODIFICATIONS

To keep staff and patients safe and maintain social distancing guidelines, we implemented:



#### Telehealth Appointments

**30%** of visits were provided through phone or video.



#### At-home STD Testing

Patients were able to mail in STD tests from the comfort of their homes.



#### At-home Birth Control Shots

Patients were mailed education and shots to administer at home.

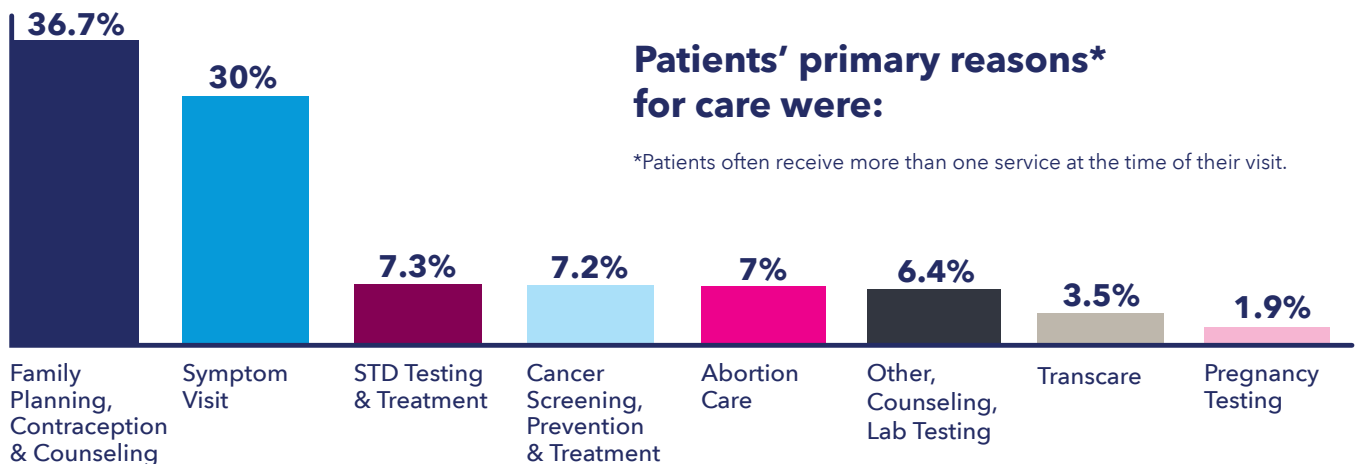


#### Curbside Care

Countless patients received care, like immunizations or sample drop-offs, from our parking lots.

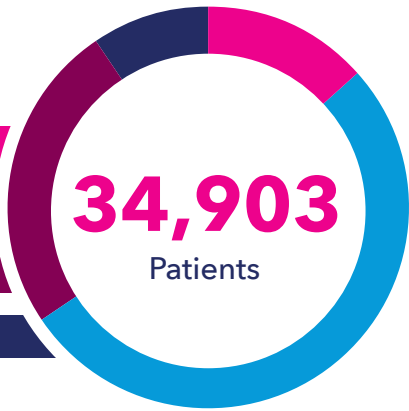


We also provided **Free Flu Shots** to patients who were unable to afford one, began offering **Medication Abortion Care** at our Topsham, ME health center, and made **Behavioral Health Counseling** available via telehealth for VT patients, while laying the groundwork for NH and ME.



## Patient Age Distribution

- Teens: 13.4%
- 20s: 52.3%
- 30s: 24.9%
- 40s +: 9.4%



# 50,865

In-person & Telehealth Visits



# 68%

 of patients had low incomes.\*

\* Low income is defined as less than twice the Federal Poverty Level, or \$25,520 for a household of 1.

Thanks to our generous supporters, we provided:

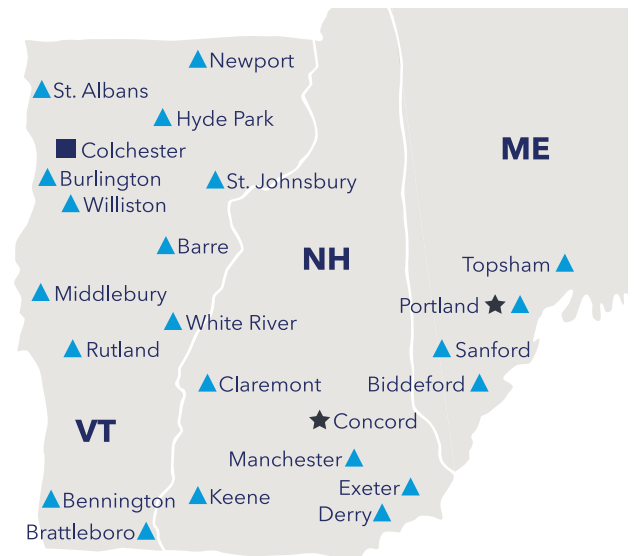
# \$5.9 million

worth of **discounted** and **free** health care to our patients.

### At PPNNE, we believe that we all have the right to ...

- high quality health care & the ability to provide it without fear of harassment & violence;
- a voice in decisions that affect our families & our lives;
- knowledge about our bodies & sexual health;
- decide the most basic & fundamental question: whether or not to become a parent;
- make decisions about childbearing free of government intrusion

**... regardless of race, gender, sexual orientation, age, income, or zip code.**



▲ PPNNE Health Center   ★ Administration & External Affairs  
■ Central Administration

## Your Support Makes It All Possible

# 215,290

Supporters

# 10,053

Donors

# 13,083

Activists

# 381

Volunteers

# 261

Staff Members

# 21

Health Centers

## 1 Mission

To provide, promote, and protect access to reproductive health care and sexuality education so that all people can make voluntary choices about their reproductive and sexual health.

### PPNNE Fundraising Departments

784 Hercules Dr., Suite 110, Colchester, VT 05446 | 1-800-287-8188 x9704

18 Low Ave., Concord, NH 03301 | 1-800-287-8188 x9704

443 Congress St., 3rd Floor, Portland, ME 04101 | 1-844-245-9388